

IT'S TIME FOR A FRESH PERSPECTIVE



Canon

ImagePRESS V1000



NEVER STAND

Challenging times call for fresh perspectives. You change the way you look. You look for efficiencies in every corner of the business. You find ways to do things better, faster, and more profitably to get the best results from your expertise, your people and your equipment and because your customers do the same, there are new opportunities for both your businesses.

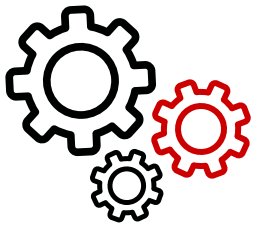
At Canon, we constantly adopt fresh perspectives. So we've taken a fresh look at the imagePRESS family of production digital printers, to see what commercial and in-house print service providers (PSPs) need in today's ever evolving production environments. We found that some things don't change. Every day is still fast-paced and demanding, with the same production challenges. You're still printing more varied jobs on more diverse media, to tighter deadlines, in shorter runs. And always without compromising on quality and consistency.

You need a robust digital print engine that can take any challenge in its stride — one that delivers all day, every day. The new Canon imagePRESS V1000 gives you all the performance you expect from an imagePRESS, plus new features to deliver consistent productivity, quality, maximum reliability and uptime, along with a wider range of applications. More applications mean more value for your business. From business cards to banners, design proofs to direct mail, packaging to posters and point of sale. However challenging the brief, you can be confident that the imagePRESS V1000 is up to the job.



STILL





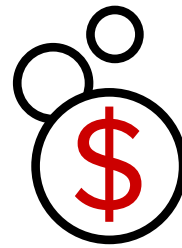
CONSISTENTLY HIGH PRODUCTIVITY

Forget about slowing down when you change media. The imagePRESS V1000's new POD-SURF fixing technology lets you switch between heavy and light media within one job, and still print at the maximum speed of 100ppm. Consumables — media, toner and toner waste — can all be changed without stopping the printer. Automatic alerts tell you when they're running low, avoiding unscheduled stops or slowdowns. And you can get device status information in real time from any location.



QUALITY YOU CAN DEPEND ON

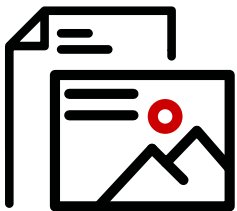
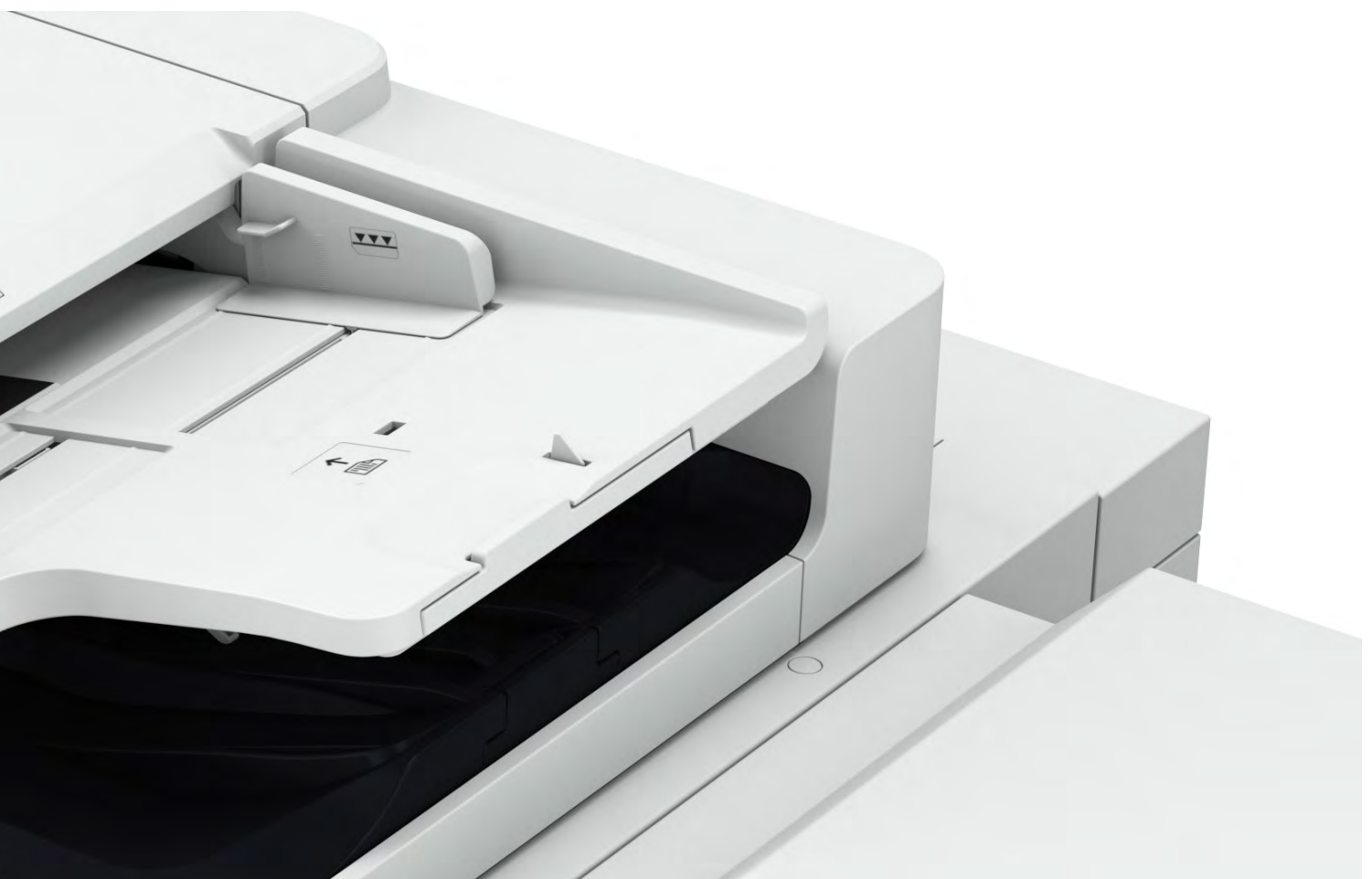
With 2,400 x 2,400dpi resolution, a default offset-like 190lpi screen pattern — among other choices — and translucent Consistently Vivid (CV) toner, premium image reproduction comes as standard on every imagePRESS. The imagePRESS V1000 adds new transfer technology and a new fixing system for pristine, flat sheets. The cooling unit — now a built-in feature on this new model — ensures no warping, sticking or bricking.



COMPACT FOOTPRINT

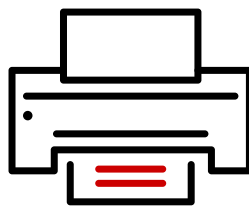
The imagePRESS V1000's best-in-class footprint — typically under 3m²* — squeezes maximum productivity and utilisation from every square metre of your print room.

**Standard configuration with Multi-Drawer Paper Deck and Booklet Finisher*



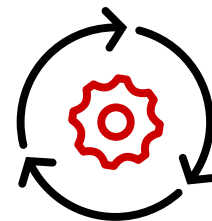
ALL-ROUND MEDIA VERSATILITY

Tackle the most innovative formats on mixed media from 52gsm to 400gsm, smooth or textured, or even water-resistant, synthetic and magnetic media. Not only that, the imagePRESS V1000 can print auto-duplex on paper up to 1.3m, creating long-sheet applications such as banners. It handles the broadest range of any mid-volume production print engine — and all at a constant 100ppm.



AUTOMATED QUALITY CONTROL

High quality is assured without continuous operator supervision from first to last page. Calibrate and adjust colour at the push of a button with the built-in inline spectrophotometric sensor. Our Multi-D.A.T. (Multiple Density Adjustment Technology) also gives real-time colour correction, giving you consistent, controlled quality and stable output over print runs - no matter how long the run-length.



END-TO-END AUTOMATED WORKFLOWS

Simplify complexity and respond to diverse demands with the highest levels of workflow efficiency. The imagePRESS can be configured with a wide range of powerful automated digital front ends, workflow tools and inline finishing options to build the print-to-finish configuration that's best for your business. Take your pick from either EFI Fiery or PRISMAsync controllers to manage every incoming job from pre-press to production.



EVEN BETTER THAN BEFORE

What's good can always be made better. It's how you run your business and it's why we're always looking for ways to make improvements to the imagePRESS. For the imagePRESS V1000 we looked at every stage in the sheet's journey through the printer — to get from start to finish faster, but without any compromise on quality. Whatever the media. Whatever the application.

NEW TECHNOLOGY FOR HIGH-QUALITY IMAGE TRANSFER

A truly innovative new take on sheet transfer technology creates the optimal transport path for every sheet, thin or thick, by making the positions of the secondary transfer roller and back-up sheet variable, depending on the weight of the media. Because the secondary inside roller moves and changes position, this makes it easier for the media to peel off from the image transfer belt.

NEW DIGITAL FRONT END

Choice of two brand new controllers to suit your workflow. Canon's PRISMAsync print server can help you boost production capacity and lower costs. imagePRESS Server D3000 powered by the Fiery FS500 Pro system software and combined with the innovative Fiery HyperRIP

NEW POD-SURF FIXING SYSTEM

Regardless of whether you're printing on light or heavy media, there's no need to stop and adjust the fixing temperature. Fixing is done through a larger diameter heating roller and a widened contact patch that give stable, uniform control to the heat supply of the fixing belt. This also creates a flat straight nip during contact with the media, resulting in higher coverage. The same constant pressure being applied to both front and back papers means that envelopes can be printed wrinkle-free at speed.

NEW REGISTRATION CORRECTION SYSTEM

A new two-step registration correction system ensures perfect front to back alignment, even when duplexing long sheets up to 1.3m. Reverse horizontal registration correction and duplex skew correction deliver ultra-stable paper transport. An optional Sensing Unit automatically detects prints that don't match the registration and colour settings for the job, and then adjusts them on the fly.

NEW INTEGRATED COOLING UNIT

An innovative new built-in cooling system cools the heated media immediately after fixing by up to 25%. Efficiently removing heat from the media maintains high production speeds and minimises waste. Sheets won't warp or stick to each other, or brick if you must leave the job standing. The result is pristine, flat sheets for optimum quality and no loss of productivity.

IN-LINE SPECTROPHOTOMETRIC SENSOR

Real-time calibration ensures consistent, stable, high-quality colour throughout continuous printing — sheet after sheet, with no operator intervention and zero impact on productivity. Just press the button to adjust colour settings — engine/DFE calibration, profile creation, verification — and say goodbye to offline quality checks.



INPUT MORE

To handle bigger volumes, add the Multi-Drawer Paper Deck E1 with the Paper Deck Double Feeding Detection Kit. This means if two or more sheets accidentally leave the tray at the same time, it will automatically divert the detected sheets to the purge unit. Again, this ensures no disruption to productivity. Want even more? Including the capacity of the main body of the device, with two multi-drawer decks, multi-drawer deck and POD Deck Light XL, as well as the MP tray feeding, you can have a maximum stacking capacity of 11,100 sheets. And don't waste time feeding long-sheets into the printer. The optional POD Deck LightXL and Bypass does it all for you.

MANAGE MORE

Just identifying and automating workflows for the most common job types can deliver impressive initial results. Use EFI Fiery or PRISMAsync controllers with the imagePRESS V1000 to manage every incoming job from pre-press to production. Automation within the print industry is commonly known to help with steps such as file reception, pre-flighting and data conversion. But hours of administrative time could be saved by automating back-office functions using a print management information system. Doing so will mean a seamless operation, so you can spend more time offering consultative value to your customers!.

OUTPUT MORE

Quality finishing adds impact to your print, and even more value to your business. Automate your imagePRESS V1000 production with Canon's comprehensive range of inline finishing solutions and you can produce more creative, innovative print applications more quickly and more cost-effectively.

MULTI-PAGE NEWSLETTERS AND BOOKLETS

Produce interactive, multi-page assets with more space for information and images, without the delays and expense of manual finishing or out sourcing.

Relevant Products

Booklet Finisher-AF1; Document Insertion Unit-R1; Plockmatic BLM35/50 Booklet Maker. The optional POD Deck LightXL and Bypass does it all for you.

FOLDED LEAFLETS AND FLYERS

Create more memorable assets that stand up and stand out by adding any of five interactive folds: Z-Fold, C-Fold, Double Parallel, Half-Fold or Accordion Z-Fold.

Relevant Products

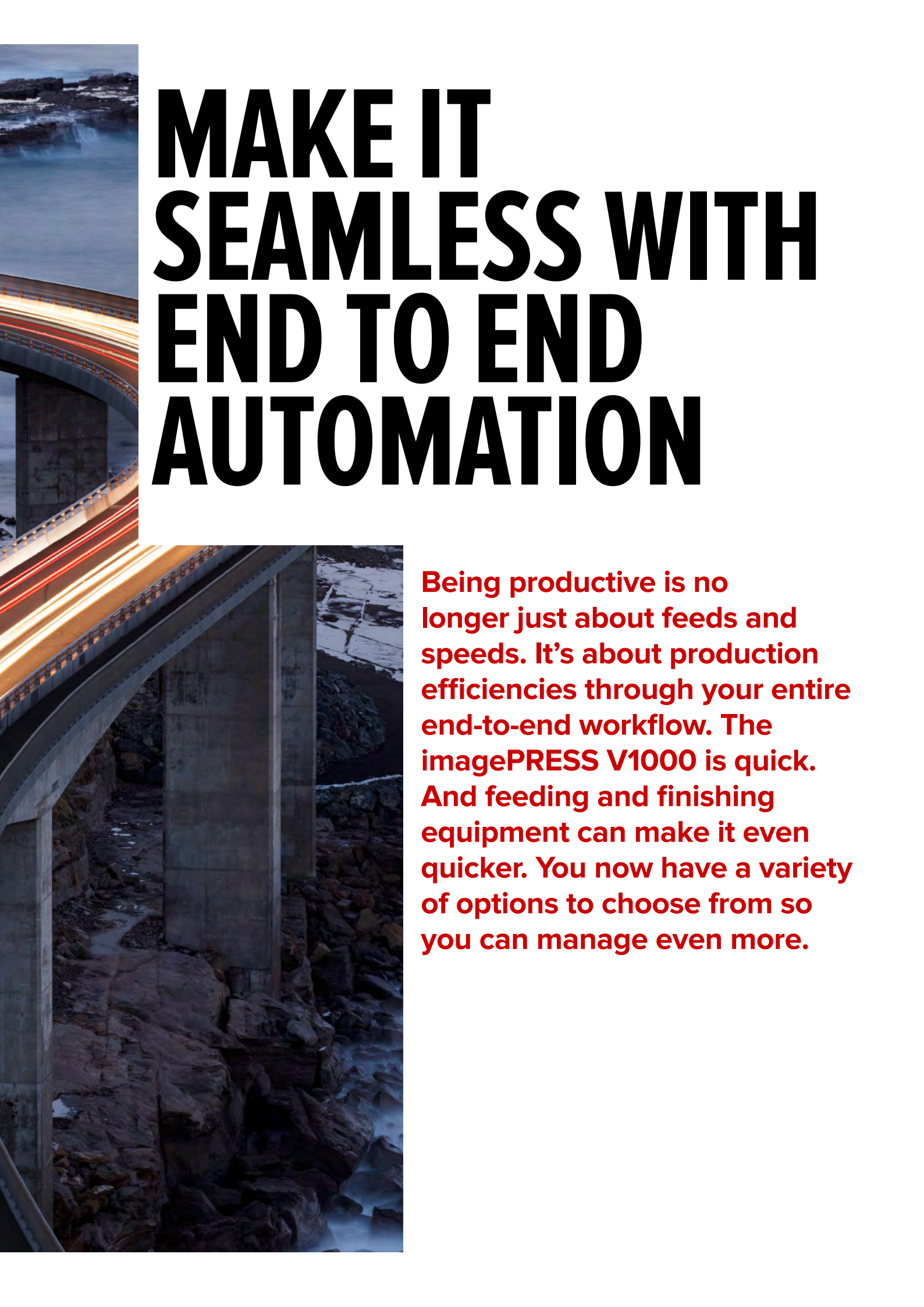
Paper Folding Unit-K1; Staple Finisher AF1; High Capacity Stacker.

BOOKS, MAGAZINES AND MANUALS

Save the time and expense of manually finishing large, professional publications, and produce the exact quantities needed, without stock wastage.

Relevant products:

Booklet Finisher-AF1; Document Insertion Unit-R1; Plockmatic BLM35/50 Booklet Maker; Perfect Binder-F1.



MAKE IT SEAMLESS WITH END TO END AUTOMATION

Being productive is no longer just about feeds and speeds. It's about production efficiencies through your entire end-to-end workflow. The imagePRESS V1000 is quick. And feeding and finishing equipment can make it even quicker. You now have a variety of options to choose from so you can manage even more.

ImagePRESS V1000

Robust functionality and innovative technology packed into a space- saving cut-sheet colour digital press



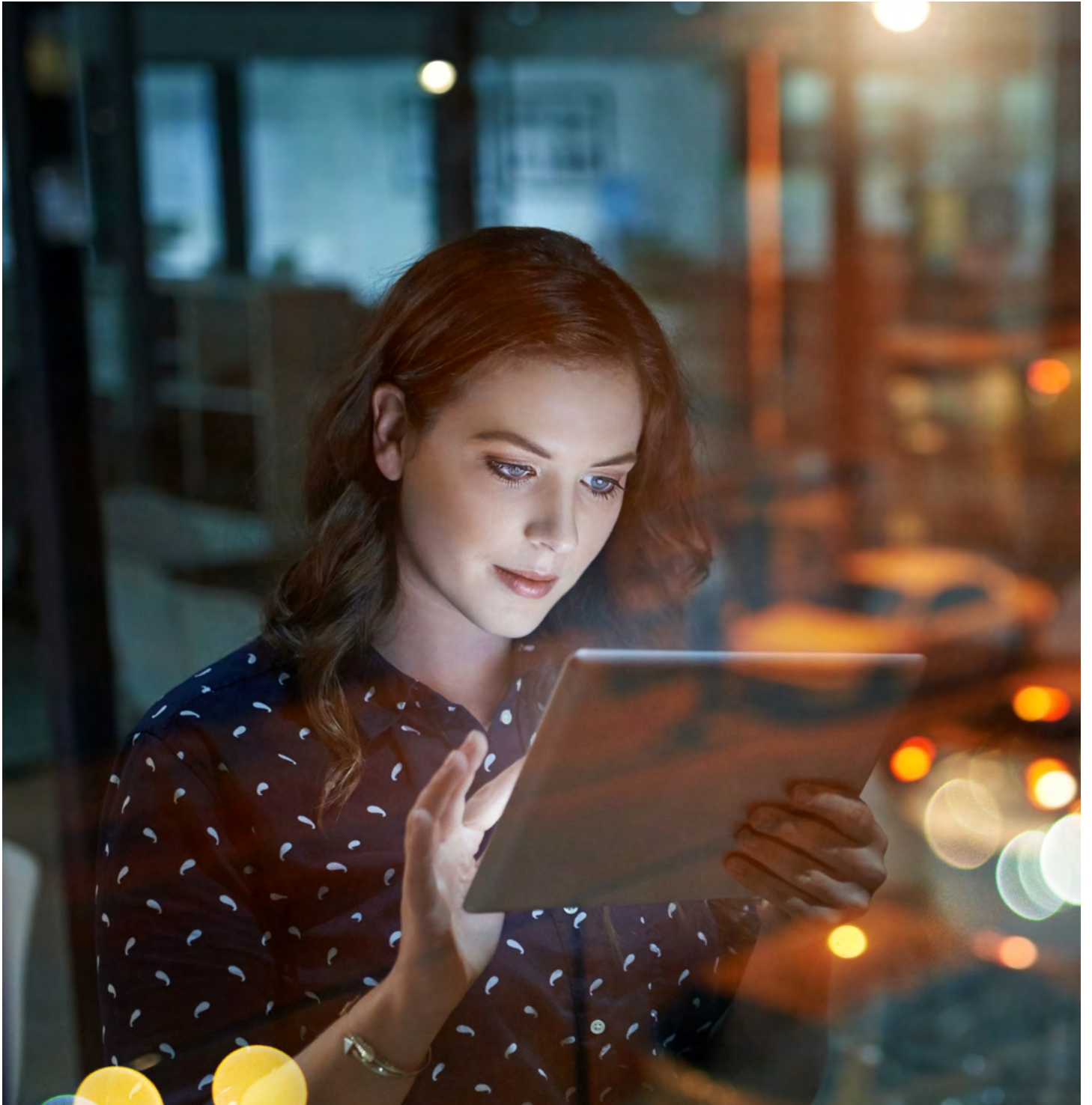
Fast, auto-duplex printing, as well as an embedded cooling unit to reduce the frequency of temperature adjustment for each sheet, deliver high productivity for a variety of print jobs by sustaining the same speed on all media weights.

Automatic duplexing of banner sheets up to 1.3m, for smooth running with minimal opera or intervention to promote a wider range of applications.

Extensive media-handling capabilities can produce a wide range of applications, including booklets, postcards, posters, and envelopes. Expand your revenue streams by printing 5-400gsm weights, synthetic and textured media.

Refine your production line with an end to-end solution. Team up an imagePRESS V1000 production press with finishing tools including professional modular in-line booklet making solutions, multi-purpose stacker and third party finishers thanks to the new Finisher Bridge and DFD Adapter.

Save labour time and costs, with built-in colour management technology that uses an Inline sensor to automatically complete DFE calibration, profile creation, and verification.



TECHNICAL SPECIFICATIONS

imagePRESS V1000

PRINT SPECIFICATIONS

Print Speed (BW/CL)	100 ppm
Recommended Monthly Volume	75,000-600,000 pages
Duty Cycle	1.2M pages
Registration tolerance	Front to back: 0.7 mm
Printing Method	Colour Laser Beam Printing
Print Resolution (dpi)	2,400 x 2,400

PAPER SUPPLY OPTIONS

Paper Supply Capacity (A4, 80gsm)	Standard: 1,100 sheets 550-sheet Paper Cassette x2 Maximum: 11,100 sheets Engine 550x2, Multi-drawer Deck (1,500+1,500+2000) x2 POD Deck Lite: 3,500 sheets POD Deck Lite XL: 4877 mm or shorter 3,500 sheets (80gsm): Longer than 4877 mm 1,000 sheets (80gsm) Multi-purpose tray: 250 sheets
--	---

Supported media types

Paper Decks (1/2):
Thin (52~63gsm), Plain (64~105gsm), Thick (106~300gsm), Recycled, Colour, Tab, Transparency, Bond, Pre-punched, Letterhead, Envelope

Multi-drawer Paper Deck:
Upper / Middle:
Thin (52-63gsm), Plain (64-105gsm), Recycled, Colour, Thick (106-350gsm), Coated (70-350gsm), Embossed, Bond, Transparency, Label, Pre Punched, Letterhead, Index, Bellum, Transparent film, Translucent film, Envelope*
Lower:
Thin (52-63 gsm), Plain (64-105 gsm), Recycled, Colour, Thick (106-400gsm), Coated (70-400gsm), Embossed, Bond, Transparency, Label, Pre Punched, Letterhead, Index, Transparent film, Translucent film, Envelope, Synthetic, Magnetic

POD Deck Lite
Thin (52-63 gsm), Plain (64-105 gsm), Recycled, Colour, Thick (106-400gsm), Coated (85-350gsm), Embossed, Bellum, Bond, Transparency, Transparent film, Translucent film, Label, Pre-Punched, Letterhead, Index, Postcard, Envelope, Synthetic

POD Deck Lite XL
4877 mm or shorter
Thin (52-63 gsm), Plain (64-105 gsm), Recycled, Colour, Thick (106-400gsm), Coated (85-350gsm), Embossed, Bellum, Bond, Transparency, Transparent film, Translucent film, Label, Pre-Punched, Letterhead, Index, Envelope, Synthetic
Longer than 4877 mm
Uncoated (64-300gsm), Coated(100~300gsm)

Multi-purpose tray:
Thin (52~63gsm), Plain(64~105gsm),Recycled, Thick (106~350gsm),Colour, Transparency, Label, Postcard, Envelope, Coated(106~350gsm), Embossed, Bond, Pre-punched, Letterhead, Vellum, Tabs

Supported media sizes

Paper Decks (1/2):
A3S, B4S, A4L, A4S, B5S, B5L, A5S, A5L, A6S, SRA3S, 11"x17"S, LGLS, LTRL, LTRS, EXE_L, STMTS, 12"x18"S, 13"x19"S, 8KS, 16KL, 16KS, Envelope, Custom size (Cross track:139.7~330.2mm, In track:182~487.7mm)
*Envelope specification
Size: Monarch, ISO-C5, DL
Custom size: Cross track: 98-330.2mm, In track: 148mm-487.7mm

POD Deck Lite
SRA3S, A3S, A4L, A4S, A5S, B4S, B5L, B5S, 13"x19"S, 12"x18"S, 11"x17"S, LGLS, LTRL, LTRS, EXECL, STMS, 8KS, 16KL, 16KS, Monarch, DL, ISO-C5, *1
Custom (139.7 x 182.0mm-330.2x487.7mm)
Envelope custom size(6"x9", 9"x12", 10"x13") *1
*1Optional Envelope kit is needed (except 10"x13")

POD Deck Lite XL
SRA3S, A3S, A4L, A4S, A5S, B4S, B5L, B5S, 13"x19"S, 12"x18"S, 11"x17"S, LGLS, LTRL, LTRS, EXECL, STMS, 8KS, 16KL, 16KS, Custom (139.7x182.0mm-330.2x487.7mm)
Long Sheet(297.0x487.8-330.2x762.0mm)

Multi-drawer Paper Deck:
Universal Cassette:
SRA3S, A3S, A4L, A4S, A5S, B4S, B5L, B5S, 13"x19"S, 12"x18"S, 11"x17"S, LGLS, LTRL, LTRS, EXECL, STMTS, 8KS, 16KL, 16KS, Monarch, DL, ISO-C5 *1
Custom (139.7x182.0 mm~330.2x487.7mm)
Custom Envelope(6"x9", 9"x12", 10"x13") *1
*1.Optional Envelope kit is needed

Multi-purpose tray:
A3S, B4S, A4L, A4S, B5S, B5L, A5S, A5L, A6S, SRA3S, 11"x17"S, LGLS, LTRL, LTRS, EXE_L, STMTS, 12"x18"S, 13"x19"S, 8KS, 16KL, 16KS, Envelope, Custom size (Cross track:100~330.2mm, In track:148~487.7 mm). Free size (Cross track 100.0~330.2 mm, In track: 182.0~487.7mm).*: 1300mm printing is possible.
*Envelope specification
Size:
Short-edge feed: Monarch, ISO-C5, DL
Custom size: Cross track: 98-330.2 mm, In track: 148mm-487.7mm

Supported media weights
Paper Deck (1/2): 52 to 300 gsm
Multi-drawer Paper Deck: 52 to 400 gsm
POD Deck Lite: 52 to 400 gsm
POD Deck Lite XL: 52-400 gsm
Multi-purpose tray: 52 to 350 gsm

Machine type	A3 Digital colour Press cut-sheet
Core functions	Print, Copy, Scan, Send, Store
Processor	1.8GHz, 1.3GHz Dual
Control Panel	10.1 inch
Memory	6GB
Hard Disk drive	SSD 240GB
Mirroring Hard Disk Drive	Yes
Interface Connection	NETWORK Standard: 1000Base-T/100Base-TX/10Base-T
Power supply	220-240V/15Ax2(Main Station),
Dimensions main engine (W x D X H)	220-240V/15A(Fusing Station)
Weight Approx.	410 KG
Operating environment temperature range	20 - 27 deg C

TECHNICAL SPECIFICATIONS

COPY SPECIFICATIONS

Only on MFD version

Copy Speed (BW/CL)	100 ppm
First-Copy-Out Time (A4)(BW/CL)	20 seconds or less
Copy resolution (dpi)	600dpix600dpi 600dpix300dpi 300dpix300dpi
Multiple Copies	Up to 9,999 copies
Copy Density	Automatic or Manual (9 Levels)
Magnification	25% - 400% (1% Increments)
Preset Reductions	25%, 50%, 70%
Preset Enlargements	141.4%, 200%, 400%
Basic Copy Features	Preset R/E Ratios by Area, Paper Setting, Previous Setting, Favourite Setting, Finishing, Two-Sided, Density Adjustment, Original Type Selection, Interrupt Mode, Setting Confirmation/Cancel
Special Copy Features	Book to Two Pages, Two-sided Original, Finishing, Booklet, Job Build, N on 1, Add Cover, Insert Sheets, Different Size Originals, Density Adjustment, Original Type Selection, Transparency Cover Sheets, Page Numbering, Copy Set Numbering, Sharpness, Erase Frame, Secure Watermark, Print Date, Shift, Gutter, Print& Check, Negative/Positive, Repeat Images, Merge Job Blocks, Job Done Notice, Mirror Image, Print on Tab, Store in Mail Box, Superimpose Image, Copy ID Card, Skip Blank Pages, Detect Feeder Multi Sheet Feed, Free Size Original

SCAN SPECIFICATIONS

Optional / Standard	Optional
Name	Duplex Colour Image Reader Unit-P1
Type	Colour Platen and Single-pass Duplexing Automatic Document Feeder [2-sided to 2-sided (Automatic)]
Document Feeder Paper Capacity (80 gsm)	200 sheets (75/80gsm)
Acceptable originals and Weights	Sheet, Book, 3-Dimensional objects Document Feeder media Weight: <Single sided> 38-220 gsm (A/B)(*1)(*2)(*3), 50-220 gsm (inch)(*1)(*3) <Double sided> 38-220 gsm (A/B)(*1)(*2)(*3), 50-220 gsm (inch)(*1)(*3) (*1) 38-50gsm: Thin mode, 160-220 gsm: heavy mode. (*2) A6R or less: 50-220 gsm (*3) BW/CL mixed original same as Non mixed
Supported media sizes	Platen: max. scanning size: 297.0 x 431.8 mm Document Feeder media size: A3S, A4L, A4S, A5L, A5S, A6S, B4S, B5L, B5S, B6S, 11"x17"S, LGLS, LTRL, LTRS, STMTL, STMTS, 8KS, 16KL
Scan Speed (ipm: BW/CL; A4)	BW: 270ipm (A4/LTR)(*1) CL: 270ipm (A4/LTR)(*1) (*1) Plain mode
Scan Resolution (dpi)	600dpi x 600dpi 600dpi x 300dpi 300dpi x 300dpi

CONSUMABLES

Toner Cartridges	Toner T11 BK/C/M/Y
-------------------------	--------------------

FIERY PRINT CONTROLLER SPECIFICATIONS

Optional / Standard	Optional
Name	imagePRESS Server D3000
Print Resolution (dpi)	1200 x 1200 600 x 600
Page Description Language(s)	PS3, PCL6
Memory	16GB
Hard Disk Storage	240GB (2.5"SSD) 1x 1TB (2.5"HDD)
Processor Speed	Core i7-8700 Coffee lake 4.6GHz, 6Core
System	FS500Pro
Fonts	138 PS fonts
Supported Operating Systems	Windows 7 (32/64 bit) / Windows 8.1 (32/64 bit) / Windows 10 (32/64 bit) / Windows 11 / Windows Server 2008 R2 (64 bit only) / Windows 2012 (64 bit only) / Windows 2012 R2 (64 bit only) / Windows Server 2016 (64 bit only) / Windows Server 2019 (64 bit only) / Windows Server 2022 (64 bit only) / MAC OS (10.14, 10.15, 11, 12)
Interface	2 x Ethernet (1000Base-T/100Base-TX/10 Base-T), USB3.2 x 5, USB2.0 x 2
Network protocols	TCP/IP (FTP, SMTP, POP, HTTP, SNMP, LDAP, SLP, SMB, LPD, IPP, WS-Discovery, Bonjour, Direct Mobile Printing, Port 9100, SNT, 802.1X, DHCP, DNS, NTP)
Direct Print	PDF2.0, EPS, TIFF, JDF1.8/JMF
VDP	PPML3.0, PDF/VT-1, PDF/VT1, VPS, FreeForm Plus
Fiery Print Controller Standard Features	Fiery Command WorkStation 6 / Paper Catalog / Fiery Spot-On / Fiery Remote Scan / Fiery Hot Folders & Virtual Printers
Fiery Print Controller Options	Fiery Impose / Fiery Compose / Fiery Impose and Compose / Fiery Graphic Arts Package / Removable HDD Kit
HW Platform	NX Pro
Dimensions (W x D x H)	235mm x 464mm x 527mm
Weight	17 KG

PRISMA SYNC CONTROLLER SPECIFICATIONS

Optional / Standard	Optional
Name	PRISMAsync for iPR V1000
Print Resolution (dpi)	1200 x 1200dpi, 600 x 600dpi
Page Description Language(s)	Postscript L3, PDF 2.0, APPE V5.7, PPML, IPDS (IS/3 standard compliant), PCL/PJL (transaction printing)
Memory	2x DDR4-2400 8GB, 16GB total
Hard Disk Drive	500GB + 1TB
Processor Speed	Intel Core i7-8700
System	PRISMAsync mark 8.3
Fonts	139 Type 1 fonts for Roman languages; User import of PS fonts via Settings Editor; Optional Adobe Asian fonts: Japanese: 5 fonts, Chinese: 2 fonts for simplified Chinese, 1 font for traditional Chinese; Korean: 1 font for Korean

imagePRESS V1000

Supported Operating Systems	Windows Server 2012 R2, 8.1 (32/64 bit) and 10, Server 2016 & 2019 MacOS 10.15 (64 bit), MacOS 11 (64 bit, Big Sur, Intel)
Interface	Ethernet 10/100/1000 BaseT x 2 USB3.0 x 8
Network protocols	TCP/IP, IPv6 Support, IPSec, NetBEUI/SMB (hotfolders, scan-to-file), secure IPP, SNMP V3, Job MIB, HTTP, HTTPS, Socket printing (port9100), LPR/LPD, JDF/JMF, LDAP, WebDav.
Direct Print	PDF, JDF
VDP	PDF/VT-1, PPML
PRISMA sync Controller Standard Features	PS/PDF, Scheduler, Multiple Queues/hotfolders, Streaming, Accounting, Scanning, PPML, Remote Manager, Remote Service, Integrity checker, Windows 10 LTSC
PRISMA sync Controller Options	E-shredding, Advanced Color Management, Advanced Impose, DocBox, Page Programming, DP Link, PCL6 TP, IPDS, PDF for IPDS

Dimensions (W x D x H) 200mm x 430mm x 420mm

Weight 18kg

OUTPUT OPTIONS

Staple Finisher-AF1	Upper Tray (A) Capacity: A4/A4R/A5R/A3/SRA3/13"x19" 1,000 sheets (52-300 gsm) / 200 sheets (301-400 gsm) Long sheet (Over 487.7 mm up to 762 mm length) 100 sheets (52-79 gsm) / 50 sheets (80-150 gsm) / 25 sheets (151-300 gsm) / 20 sheets (301-350 gsm) Lower Tray (B) Capacity: A4 4,000 sheets (52-80 gsm) / 3,000 sheets (80.1-300 gsm), A4R 2,000 sheets (52-300 gsm), A3 1,500 sheets (52-300 gsm), SRA3 1,000 sheets (52-300 gsm), Any size 200 sheets (301-350 gsm) Paper Weight: 52 to 350 gsm Staple Position: Corner, Double Staple Capacity: A4: 100 sheets, A3/A4R: 50 sheets Dimensions (W x D x H): 800 mm x 792 mm x 1,239 mm (with Long Sheet Tray : 1,136 mm x 792 mm x 1,239 mm) Weight: Approx. 130 kg Power: 220-240V, 50-60Hz, 8A
----------------------------	--

Booklet Finisher-AF1	Tray Capacity / Paper Weight / Staple Position / Staple Capacity: same as Staple Finisher-AF1 Booklet stitch Paper size: A3, A4R, SRA3, 13"x19", Free size (210 x 279.4 mm to 330.2 x 487.7 mm) Booklet stitch Paper Weight: Body sheet 52-220 gsm, Cover sheet 64-300 gsm Booklet stitch staple capacity: 25 sheets (52-80 gsm, include cover) Dimensions (W x D x H): 800 mm x 792 mm x 1,239 mm (with Long Sheet Tray: 1,136 mm x 792 mm x 1,239 mm) Weight: Approx. 180 kg Power: 220-240V, 50-60Hz, 8A Non Staple Folded Bunch Capacity: up to 5 sheets (60 to 105 gsm) Power Source: 100-240V, 50 / 60Hz, 2.8A Dimensions (W x D x H): 896 x 765 x 1,040 mm (when the extension tray is extended) Weight: Approx. 110 kg
-----------------------------	---

Puncher Unit-BT1/BU1	(Requires either the STAPLE FINISHER-AF1 or BOOKLET FINISHER-AF1) Two or Four Holes Punch Hole type: BT1: 2 holes and 4 holes (FRN) selectable, BU1: 4 holes (SWE) Punch Paper Weight: 52-300 gsm [2 holes: A3, A4, A4R, Free size (182 x 182 mm to 297 x 432.0 mm excluding 203 x 257 mm to 297 x 270 mm) 4 holes: A3, A4, Free size (257 x 182 mm to 297 x 432 mm)]
-----------------------------	---

Multi Function Professional PUNCHER-C1

Paper Weight: <Punch> 75-300 gsm (Plain paper), 118-300 gsm (Coated paper) <Crease> 157-300 gsm (Plain paper / Coated paper) <Through> All substrates supported by engine Paper size: <Through> All substrates supported by engine <Punch> SRA3, A3, SRA4, SRA4R, A4, A4R <Crease> SRA3, A3, A4R, 13"x19", 13"x19.2" Punch Tools: Plastic Comb 21-Hole, Twin Loop 23-Hole (Round/Square), Twin Loop 34-Hole (Round/Square), Color Coil 47-Hole, Velo Bind 12-Hole, Loose Leaf 4-Hole Punch, Loose Leaf 2-Hole Punch, Loose Leaf 4-Hole (Swedish), Crease Dimensions (W x D x H): 445 mm x 795 mm x 1,040 mm Weight: Approx. 102 kg Power: 230V, 50Hz, 1.9A
--

Booklet Trimmer-G1	Requires Booklet Finisher-AF1 Trim Width: 2-28mm Trim Thickness: Up to 50 sheets (include cover) Paper Weight: 52 to 300 gsm Chip tray capacity: Approx. 5,000 sheets (Trim width 20mm, A4, 80gsm) Dimensions (W x D x H): 2,095 mm (including joint, conveyor and output tray) x 790 mm x 1,040 mm Weight: Approx. 178 kg (including conveyor and output tray)
---------------------------	---

Two-Knife Booklet Trimmer-B1 and Two-Knife Booklet Trimmer Conveyor-B1	Requires Booklet Trimmer-G1 Trim Width: 2-15 mm Trim Thickness: Up to 50 sheets (include cover) Paper Weight: 52 to 300 gsm (Trim 60 to 300 gsm) Chip tray capacity: Approx. 5,000 sheets (Trim width 20mm, A4, 80 gsm) Dimensions (W x D x H): 2,312 mm (including Booklet Trimmer-F1) x 790 mm x 1,040 mm Weight: Approx. 145 kg Power: 220-240V, 60Hz, 2.3A
---	---

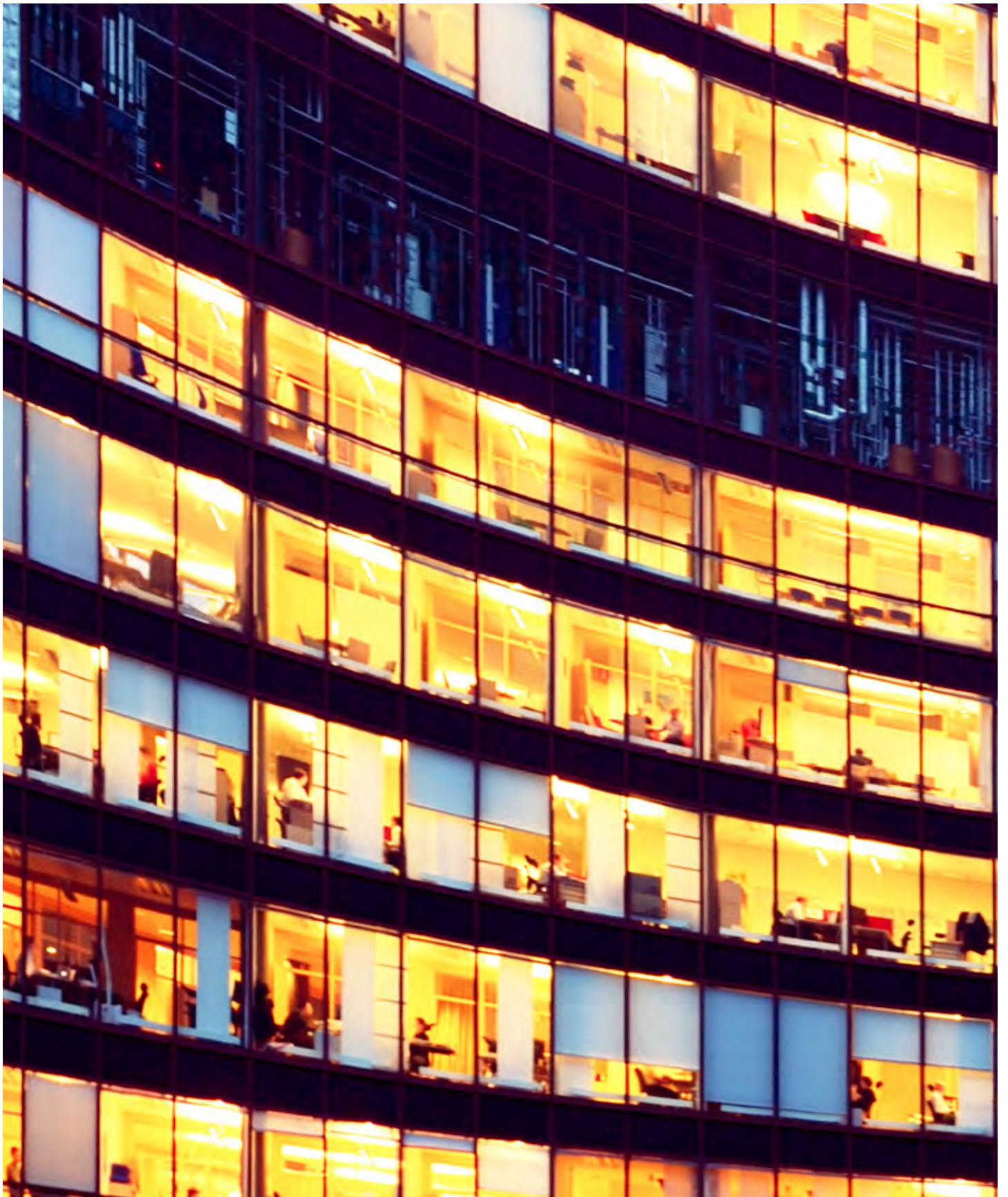
High Capacity Stacker-J1	Paper size: A3, A4, A4R, A5R, SRA3, 13"x19", Free size (140 x 182 mm to 330.2 x 1,300 mm) Paper Weight: 52 to 350 gsm Output Capacity Stack tray: 6,000 sheets (80 gsm) in two stacks of 3,000 sheets each Top Tray: 200 sheets (80 gsm, 140 x 182 mm to 330.2 x 762mm), 100 sheets (210 x 762.1 mm to 330.2 x 1,300 mm) Dimensions (W x D x H): 899 mm x 745 mm x 1,040 mm Weight: Approx. 120 kg Power: 90-264V, 47-63Hz, 10A
---------------------------------	---

Document Insertion Unit-R1	Number of trays: 2 Tray Capacity: Upper Tray: 200 Sheets (80 gsm), Lower Tray: 200 Sheets (80 gsm) Acceptable Paper Type: Thin, Plain, Recycled, Colour, Thick, Pre-punched, Letterhead, Bond, Coated, Tab, Tracing, Textured Acceptable Paper Sizes: SRA3, A3, A4, A4R, B4, B5, B5R, Custom size (182.0 x 182.0 mm to 330.2 x 487.7 mm) Acceptable Paper Weight: 52 to 300 gsm Power Source: 100-240V/50/60Hz 1.0A Dimensions (W x D x H): 336 x 793 x 1,407 mm (width excluding document tray) Weight: Approx. 61 kg
-----------------------------------	--

Paper Folding Unit-K1	Supported Folding Type: Z-Fold, Accordion Z-Fold, C-Fold, Half-Fold, Double Parallel Fold Acceptable Paper Type: Thin, Plain, Recycled, Colour, Bond Acceptable Paper Sizes: Z-Fold : A3, A4R , B4 Accordion Z-Fold, C-Fold, Half-Fold, Double Parallel Fold: A4R Acceptable Paper Weight: Z-Fold, Accordion Z-Fold, C-Fold, Half-Fold: 52 to 105 gsm Double Parallel Fold: 52 to 90 gsm Power Source: From the Finisher Dimensions (W x D x H): 336 x 793 x 1,190 mm Weight: Approx. 71 kg
------------------------------	--

TECHNICAL SPECIFICATIONS

Perfect Binder-F1	<p>Booklet size: 203 x 138 mm to 297 x 216 mm Booklet thickness: Up to 25mm Cutting Range: Top/bottom: 6.5 to 39.5mm at each edge, fore edge: 6.5 to 49.5mm Body pages: Sizes: A4, SRA4, Free size (257 x 182 mm to 320 x 228.6 mm) Paper Weight and number of sheets: Thin Paper (52-63 gsm): 30-200 sheets Plain Paper (64-80 gsm): 10-200 sheets Plain Paper (81-90 gsm): 10-150 sheets Thick Paper (91-105 gsm): 10-150 sheets Thick Paper (106-163 gsm): up to 10 sheets as insertion sheet or up to 25 mm as thickness of bunch Cover: Number of Sheets: 1 sheet Sizes: A3, SRA3, Free size (257 x 364 mm to 330.2 x 487.7mm) Paper Weight: 90 to 300 gsm Tray capacity: Approx.127 mm or approx.1,000 sheets of paper as a total Dimensions : 922 mm x 791 mm x 1,300 mm Weight Approx. 308kg Power: 220-240V, 50/60Hz, 3.0A</p>
DFD Adapter-B1	<p>Enables DFD connectivity directly with the Finisher Bridge Paper Weight: Plain Paper 52-400 gsm, Coated Paper 128-400 gsm Paper size: 182 x 182 mm-330.2 x 487.7 mm Optionals: Finisher Bridge Height Kit 1002-A1 (Standard DFD height is 860 mm) Dimensions (W x D x H): 300 mm x 745 mm x 1040 mm Weight: Approx. 60 kg Power: 90–264V, 47–63Hz, more than 10A</p>
Finisher Bridge-A2	<p>Offers connectivity of Staple Finisher-AF1 and Booklet Finisher-AF1 with 3rd party DFD finishing equipments. Always in combination with DFD Adapter-B1. Paper Weight: Plain Paper 52-400 gsm, Coated Paper 128-400 gsm Paper size: 182 x 182 mm-330.2 x 487.7 mm Dimensions (W x D x H): 600 mm x 745 mm x 150 mm Weight: Approx. 30 kg Power: Power and control from DFD Adapter-B1</p>
3rd Party Finishers	<p>The imagePRESS V1000 can be configured also with 3rd party finishers Plockmatic BLM35/50 Booklet Maker Plockmatic MPS (Multi-Purpose Stacker)</p>
Staple Cartridge	<p>STAPLE-N1-for Stapling (3 x 5,000 pcs) (for Staple Finisher-AF1 and Booklet Finisher-AF1) STAPLE-P1-for Saddle Sticking (2 x 5,000 pcs) (for Booklet Finisher-AF1)</p>
Sensing Unit	<p>Type: Inline CIS + Spectrophotometer(SPM) Scanning Front to back registration: Paper size: All media sizes supported by the engine. (Long sheet over 762mm is not supported) Print margin necessary for registration adjustment mark: Cross track direction:9.21mm(3.5mm(Print Margin) + 4.71mm(Registration Adjustment Mark) + 1mm(White Area) Paper feed direction:9.5mm(4.0mm(Print Margin) + 4.5mm(Registration Adjustment Mark) + 1mm(White Area)</p>



Canon Australia Pty Ltd
1800 444 199
canon.com.au/business
Canon New Zealand Ltd
0800 222 666

Canon

imagePRESS V1000
